

Ryhmä 1



Kolmio 180040
60 x 52 mm



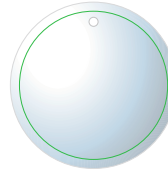
Kypärä 200075
37 x 60 mm



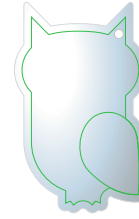
Puhekupla 160033
50 x 50 mm



Kuusi 180046
38 x 69 mm



Pyöreä 160012
55 x 55 mm

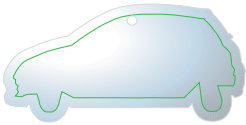


Pöllö 130091
44 x 70 mm



Talo 140103
66 x 51 mm

Ryhmä 2



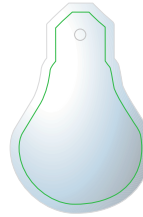
Auto 120105
70 x 28 mm



Haamu 120123
50 x 54 mm



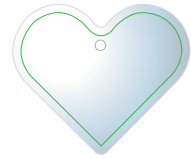
Risti 130345
55 x 75 mm



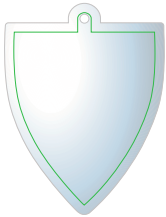
Lamppu 120096
70 x 47 mm



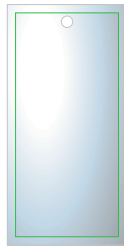
T-paita 120355
64 x 63 mm



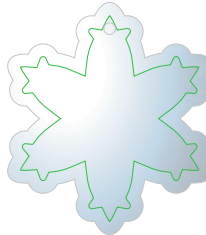
Sydän 16005
59 x 50 mm



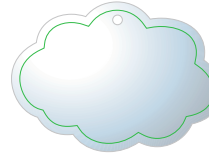
Vaakuna 120113
53 x 70 mm



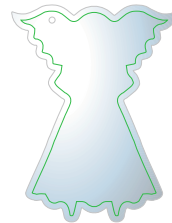
Suorakaide 120097
40 x 80 mm



Hiutale 150115
48 x 55 mm

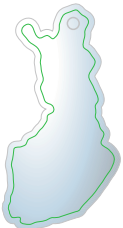


Pilvi 120087
70 x 50 mm



Enkeli 120345
53 x 70 mm

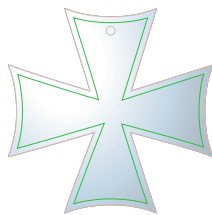
Ryhmä 3



Suomi
80 x 41 mm



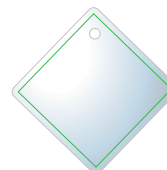
Neliapila 090449
60 x 60 mm



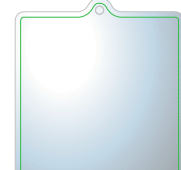
Maltanristi 090384
70 x 70 mm



Salama 100138
46 x 122 mm



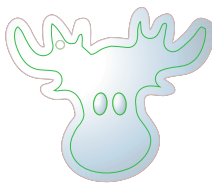
Neliö 090181
55 x 55 mm



Neliö 090255
62 x 67 mm



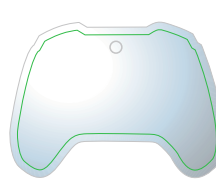
Tähti 090219
68 x 65 mm



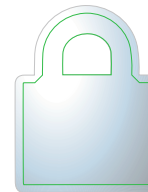
Hirvi 090051
72 x 60 mm



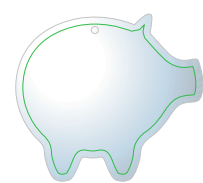
Risti 100554
60 x 60 mm



Peliohjain 080456
61 x 84 mm



Lukko 080061
57 x 73 mm



Possu 080056
80 x 71 mm

JOUSIHEIJASTIN 30 X 340 MM

Heijastimen pohjaväri omalla PMS värillä. Musta/harmaa nukka tausta.

Kiinnitä jousiheijastin käsivarteen oikealle puolelle (ajoradan puolelle).
Vahingoittunut heijastin on vaihdettava uuteen. Pimeällä heijastimen
käyttö on pakollista myös valaistulla taajama-alueella.

Fäst slappwrap till höger om armen (på sidan mot körbanan). En skadad
reflex måste bytas ut. Användning av reflektor är obligatoriskt i mörker även
i belysta tätbebyggda områden.